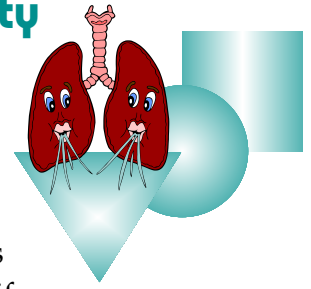


# Building Pulmo Park: A Constructivist Activity

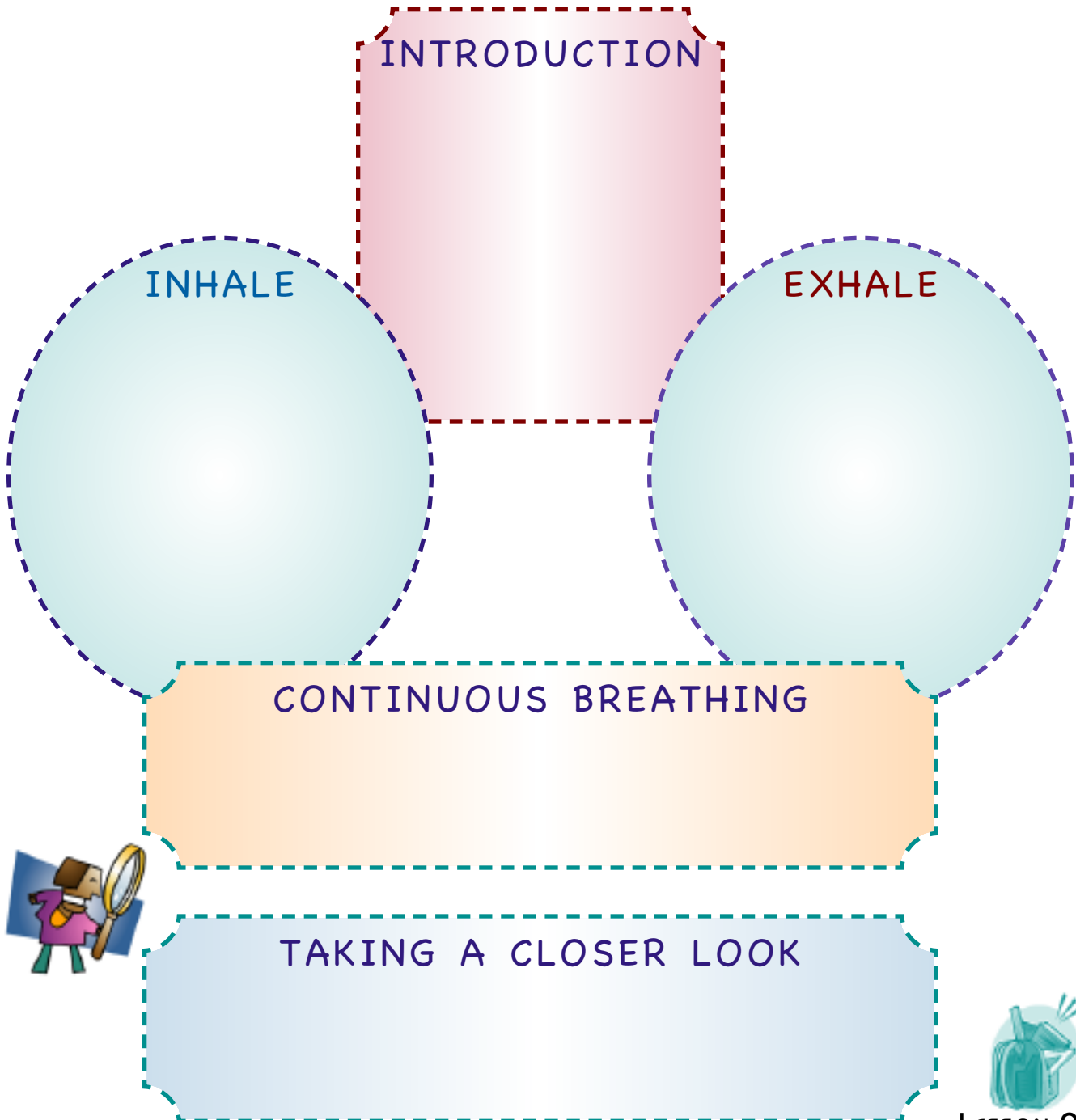
## Student Data Page 2A



### Part I. The Pulmo Park Blue Print

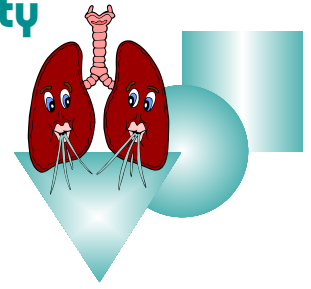
1. *Explore what you already know and what you can learn on your own.*

Carefully observe the flash animation called, *The Anatomy of Breathing* as you watch, notice what is happening during inhaling and exhaling – see if you can figure out what makes it happen. Use the flash animation *as many times as you need to do a thorough job*. It is found at the following URL: (<http://teachhealthk12.uthscsa.edu/curriculum/pulmonary/pulmonary-breathsimulation.html>).



# Building Pulmo Park: A Constructivist Activity

## Student Data Page 2A



### Part II. Under Construction

#### STATION A

1. How was the model of inhaled air like the model of exhaled air?

---

---

2. How was the model of the inhaled air different from the model of exhaled air?

---

---

3. Why do you think only two gases changed in the models of and exhaled air?

---

---

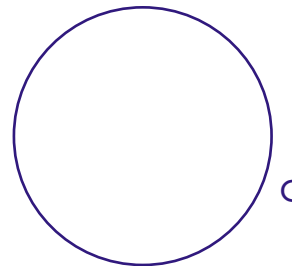
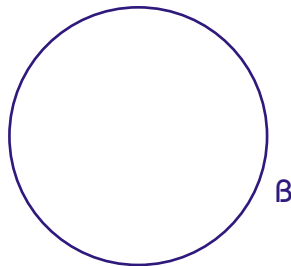
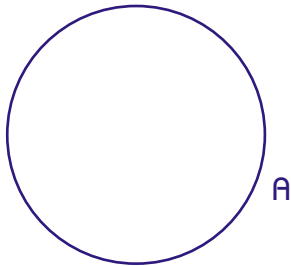
4. What do you think caused the difference?

---

---

#### STATION B

Record your findings *on the Builder's Log!*



#### STATION C

Record Observations *on the Builder's Log*

---

---

---

#### STATION D

Record Observations *on the Builder's Log:*

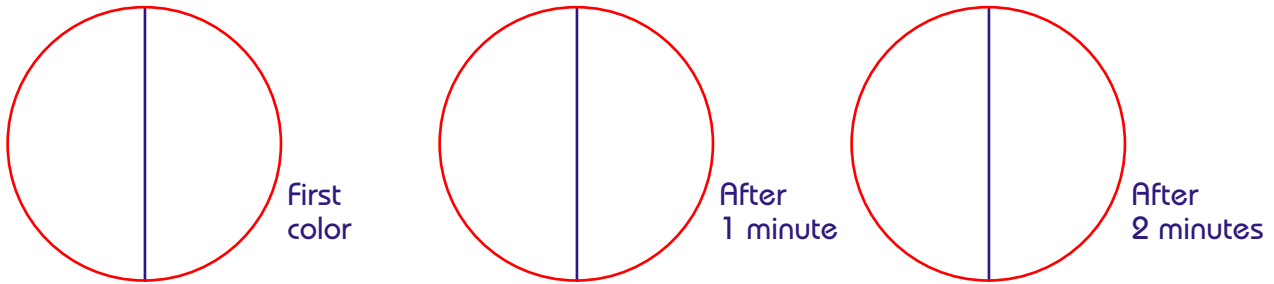
---

---

---

**STATION E**

Make recordings *on the Builder's Log*. (1/2 for water and the other for carbonated water – Be sure to label).



What evidence have you found that indicates you breathe out carbon dioxide?

**STATION F**

Make drawing and record data *on the Builder's Log*.



**STATION G**

Record observations *on the Builder's Log*:

Without Dye:

---

---

With Dye:

---

---

What is the advantage of having the respiratory tree branch out as it does?

**STATION H**

Record observations *on the Builder's Log*:

After 2 minutes:

---

---

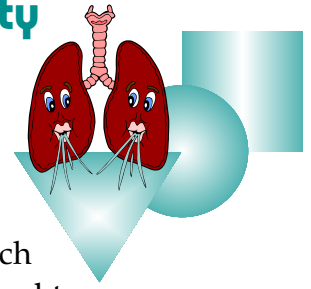
After 4 minutes:

---

---

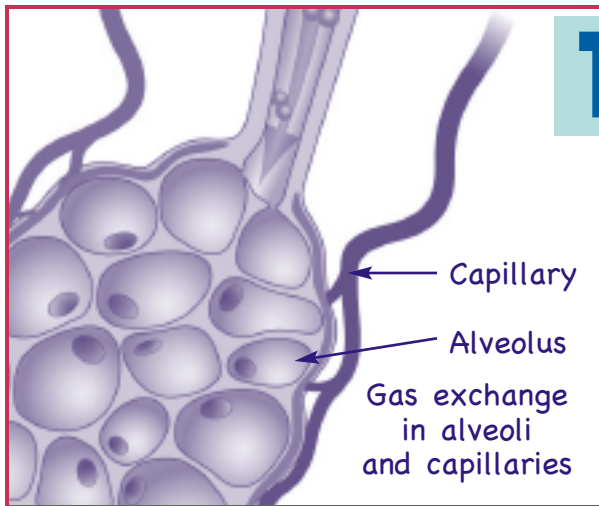
# Building Pulmo Park: A Constructivist Activity

## Student Data Page 2A



### Part III. Pulmo Park Builder's Log

**Directions:** As you go to the lab stations, keep this *Pulmo Park Builder's Log* with you. Record your observations as directed at each lab station. Next, match the lab to the pulmonary function it demonstrates by placing the letter assigned to the lab in the appropriate space on your *Pulmo Park Builder's Log*. Be ready to justify your answers as part of a classroom debate.



Labs \_\_\_\_\_, \_\_\_\_\_, \_\_\_\_\_

How does the structure of this part of the respiratory system help it do its job (function)?

---

---

---

---

---

Lab \_\_\_\_\_

How does the structure of this part of the respiratory system help it do its job (function)?

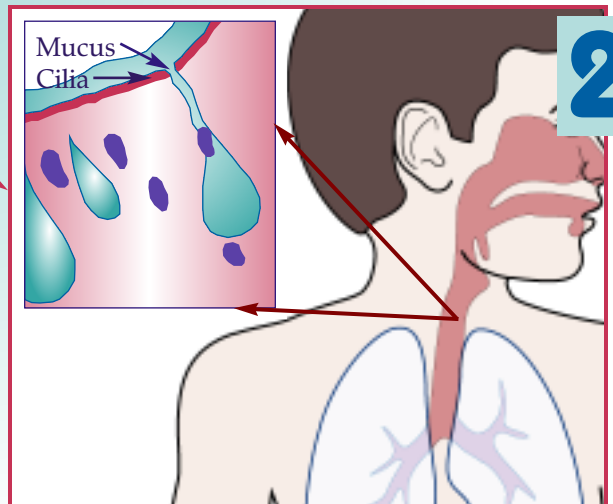
---

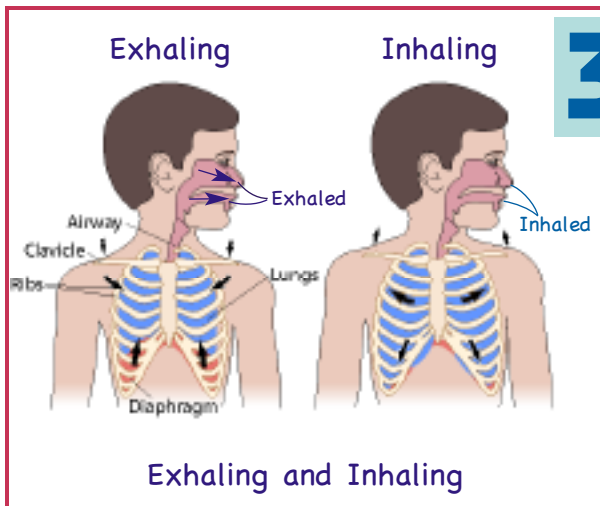
---

---

---

---





3

Labs \_\_\_\_\_, \_\_\_\_\_,  
 How does the structure of this part of the respiratory system help it do it's job (function)?

---



---



---



---



---

Lab \_\_\_\_\_,  
 How does the structure of this part of the respiratory system help it do it's job (function)?

---



---



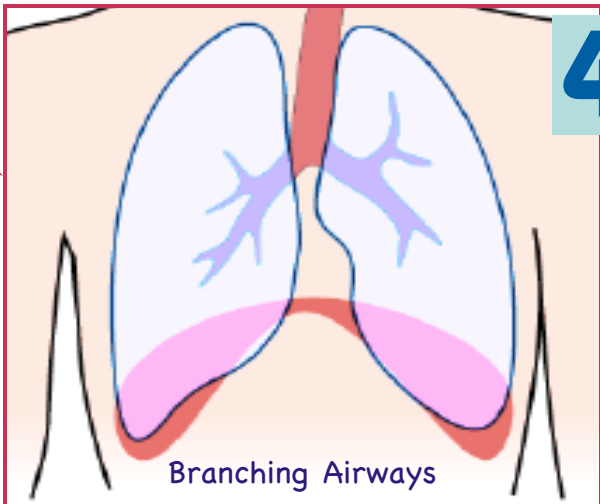
---



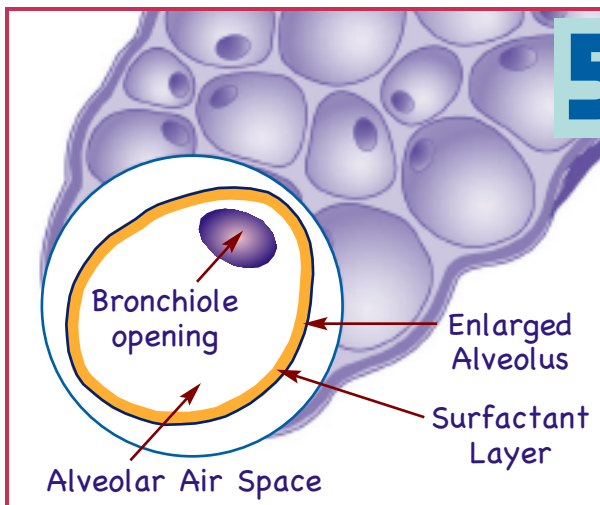
---



---



4



5

Lab \_\_\_\_\_,  
 How does the structure of this part of the respiratory system help it do it's job (function)?

---



---



---



---



---

