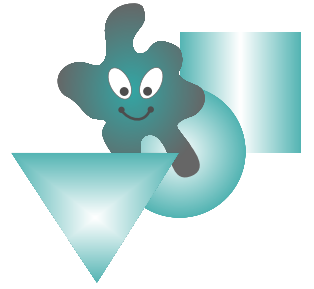


Dire Progress: Observing the Stages of Atherosclerosis

Student Data Page 4 C



A collection of overlapping, tilted rectangular shapes designed for student data entry. At the top left is a yellow rectangle. Below it is a pink rectangle containing a light blue lined writing area with a pink ink smudge in the top right corner. Below the pink rectangle is a teal rectangle containing a purple lined writing area. A dashed blue arrow points from the bottom of the purple writing area to the top of the teal rectangle. To the right of the teal rectangle is a circular diagram of a cell or tissue with a blue nucleus and yellow organelles. At the bottom is a light green rectangle containing a purple lined writing area.



A collection of overlapping sticky notes and papers. At the top is a yellow sticky note. Below it is a large pink lined paper with seven horizontal lines. A red dashed arrow points from the bottom right corner of this paper towards a teal sticky note. Below the teal note is a light purple lined paper with seven horizontal lines. A green, spiky, smiling character is positioned at the bottom left of this paper. Below the purple paper is a light blue sticky note. A blue dashed arrow points from the bottom right corner of the purple paper towards a yellow lined paper. The yellow paper has five horizontal lines and a smiling red tomato character in the top right corner.